

# Firehouse Siren Series

## Trusted and Dependable Warning for Firehouse Applications

*Whelen Engineering has long been a familiar name around the firehouse. Our products can be trusted to alert personnel and community alike in situations when pagers can't or won't. Depend on Whelen Engineering for all your audible and visual warning needs.*

### Omni-Directional Siren Models

- FHS1 - One Speaker Cell - 108dB
- FHS2 - Two Speaker Cells - 114dB
- FHS3 - Three Speaker Cells - 115dB
- FHS4 - Four Speaker Cells - 118dB

### Siren Features

- Two-Compartment (Type I) Natural Finish Aluminum Cabinet
- Includes one to four High Efficiency 400 Watt EZ-PULL™ Speaker Drivers (depending on model)
- 50' Cable
- Battery Powered, Minimum of 15 Minutes of Full Power Output With Batteries of Our Recommendation
- AC Temperature Compensated 5 Amp Battery Charger
- Local Controls or Remote Controls
- One to Four Power Amplifiers (depending on model)
- Electronic Siren Controller
- Tone Generator
- Timer
- Local Control Push Buttons
- SI TEST®
- Low Battery Alarm
- 2 relay driver boards ERDB
- AUXIN included for contact closure activation
- Battery Tray
- Lightning Arrestor
- Six Standard Public Warning Tones - Wail, Whoop, Attack, Hi-Lo, Alert, Airhorn

### Siren Options

- Solar Power available
- Speaker Pole Top Bracket available
- ISB24\*, 24VDC strobe
- L31H\*F4, 24VDC LED
- VALERT\* VisuAlert™ Product

Specify color by replacing \* \* \* symbol in model number with letter indicating lens color or LED color desired:  
A = Amber; B = Blue; C = Clear/White; R = Red; G = Green

### Siren Activation Controls

Our Firehouse Sirens can be activated in any number of ways:

- Plectron
- Landline
- VHF High and UHF Wide-Band Frequencies
- VHF High and UHF Narrow-Band Frequencies
- 800Mhz Trunking
- MOSCAD
- FSK
- Two-Tone Sequential

Our VHF High and UHF siren activation control packages include the following:

- Radio
- Radio Interface
- Tone Squelch
- 2-3dB Gain Omni-Directional Antenna with Bracket
- 35' of RG58 Antenna Cable
- Polyphaser
- SI TEST

Other features are dependent upon one or two-way controls. Whelen equipment can be interfaced with many different types of two-way radio communications products and systems including 800Mhz trunking, Motorola's MOSCAD, FSK, Narrow-Band and VHF Low Band. The following is available as standard options. Contact factory for special applications.

# WHELEN™

MASS NOTIFICATION PRODUCTS

### One Way Controls

- FAUXIN - Auxiliary Board for Contact Closure Activation (included)
- FD2020LL - 10 Digit DTMF Landline Activation
- FD2020H - 10 Digit DTMF VHF High Band / 150-170 Mhz
- FD2020U - 10 Digit DTMF UHF / 450-470 Mhz
- FTT - Two-Tone Sequential Option

### Two-Way Controls

- FAUXCS - Two-Way Contact Closure Activation and Status Board
- FC2020LL - Two-Way Landline Activation
- FC2020H - 10 Digit DTMF VHF High Band / 150-170 Mhz
- FC2020U - 10 Digit DTMF UHF / 450-470 Mhz
- FC2020NH - 10 Digit DTMF VHF High Band Narrow-Band
- FC2020NU - 10 Digit DTMF UHF Narrow-Band

### Options:

- FFSKXMOD - Converts the Siren Activation Controls to FSK Format
- FSTATUS - Cabinet Window LED Status Indicator
- FPGINT - Paging Interface to Interface Whelen Tones with Existing Paging Systems
- FINTRU - Intrusion Alarm (available with two-way only)



FHS1 One Cell to  
FHS4 Four Cell  
Omni-Directional  
Sirens

# Firehouse Series Specifications



## MASS NOTIFICATION PRODUCTS

51 Winthrop Road  
 Chester, Connecticut 06412-0684  
 (860) 526-9504  
 1-800-637-4736  
 Fax: (860) 526-4784  
 www.whelen.com  
 iowasales@whelen.com

Whelen Engineering Company, Inc. reserves the right to upgrade its products with design improvements without notification.  
 © 2010 Whelen Engineering Company, Inc.  
 Printed in the U.S.A.  
 12418A-110110

FHS MODELS	COMPONENT Height Inches (CM)	COMPONENT Width Inches (CM)	COMPONENT Depth Inches (CM)	COMPONENT Weight Lbs. (KG)	ACOUSTIC PERFORMANCE		
					SPL @ 100'	Estimated 70dB Range	Estimated 60dB Range
FHS1 One Cell Speaker	20.4 (51.8)	33.4 (84.8)	—	107 (48.5)	108 dBC	1,400'	2,800'
FHS2 Two Cell Speaker	32.9 (83.6)		—	156 (70.8)	114 dBC	2,200'	4,400'
FHS3 Three Cell Speaker	45.4 (115.3)		—	205 (92.99)	115 dBC	2,400'	4,800'
FHS4 Four Cell Speaker	57.9 (147.1)		—	254 (115)	118 dBC	2,800'	5,600'

NOTE: 100' performance levels listed represent repeatable results within +/-1dB to stated levels. Estimated 70dB perimeter is based on the Federal Emergency Management Agency's (FEMA) - 10dB per distance doubled path model.

FHS MODELS	FHS ELECTRONICS CABINET TYPE I				POLE TOP BRACKET			
	Height Inches (CM)	Width Inches (CM)	Depth Inches (CM)	Weight Inches (CM)	Height Inches (CM)	Width Inches (CM)	Depth Inches (CM)	Weight Inches (CM)
FHS1	32.5 (82.6)	22.5 (57.2)	10.5 (26.7)	62 (28.2)*	30.0 (76.2)	12.0 (30.5)	(See Drawing)	71 (32.3)
FHS2				69 (31.3)*		(See Drawing)	10.0 (25.4)	
FHS3				76 (34.5)*		12.0 (30.5)	(See Drawing)	
FHS4				83 (37.7)*				

\* Less batteries. Two batteries, Delco DC74, add 90 Lbs. (40.9kg)

### FHS FIREHOUSE SERIES COMPONENTS AND OPTIONS



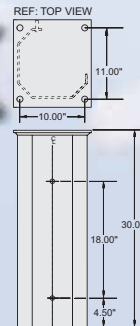
FHS Series Cabinet Wall Mount



FHS Series Solar Power option with a roof mount



Pole Top Bracket



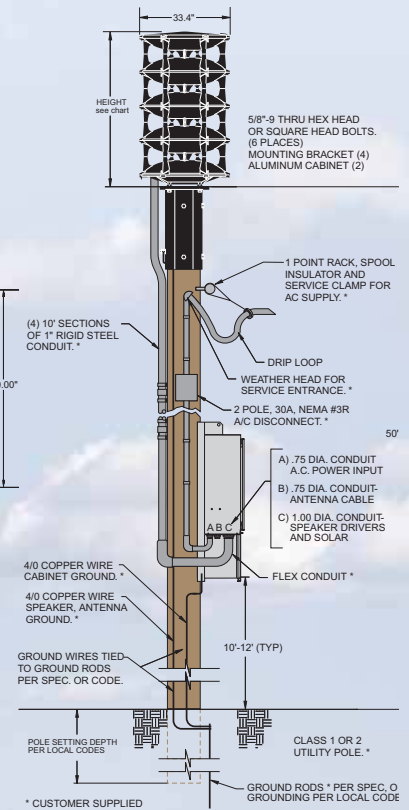
VisuAlert™ Omni-Directional visual warning option to compliment the FHS Series audible warning



ISB24R 24VDC strobe top mount option for FHS Series



L31HRF4 24VDC Super-LED top mount option for FHS Series



**MID-STATE COMMUNICATIONS**  
 www.midstatecomm.com 800-926-7277